

E-Trac Lite

Enclosed Track Conveyor



1stSource Products, Inc.

www.1stsourceproducts.com

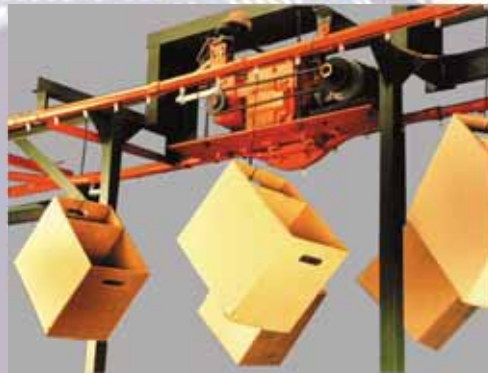


E-Trac Lite Enclosed Track Conveyor

Thank you for your interest in the E-Trac Lite product line. No other overhead conveyor system for the price offers the adaptability, reliability and ease of maintenance of E-Trac Lite Enclosed Track Equipment. This engineered product line is built around special cold-formed, open seam steel tubing tracks, high tensile, heat-treated roller bearing chain and standard zinc-plated pendants and side plates. The 1stSource E-Trac Lite product line is a top quality solution for your light duty overhead conveyor application.

Applications:

- Light Manufacturing
- Small Parts Assembly
- Finishing Systems
- Box Delivery Systems
- Clean Room Environments
- Garment Handling Systems



In service for over 30 years, E-Trac Lite Enclosed Track Conveyor systems have a proven track record of reliable and safe productivity. E-Trac Lite equipment offers safety features absent in other conveyor systems. The enclosed track protects employees from entanglement with moving chain, while simultaneously keeping the chain from damage by external sources.

Durable E-Trac Lite systems offer easy maintenance, with track inspection stations and automatic lubrication. Part replacement is fast and efficient. 1stSource offers total support on standard replacement parts for E-Trac Lite Systems.

The overhead E-Trac Lite Enclosed Track Conveyor system is designed for use where loads do not exceed 30 pounds per chain pendant or 60 pounds per foot of conveyor. Individual loads of 120 pounds can be supported with a double chain bar carrier.

This catalog contains basic product information to assist you in application and proper component selection. Please consult one of our qualified local distributors or 1stSource directly should more detailed technical information be required.

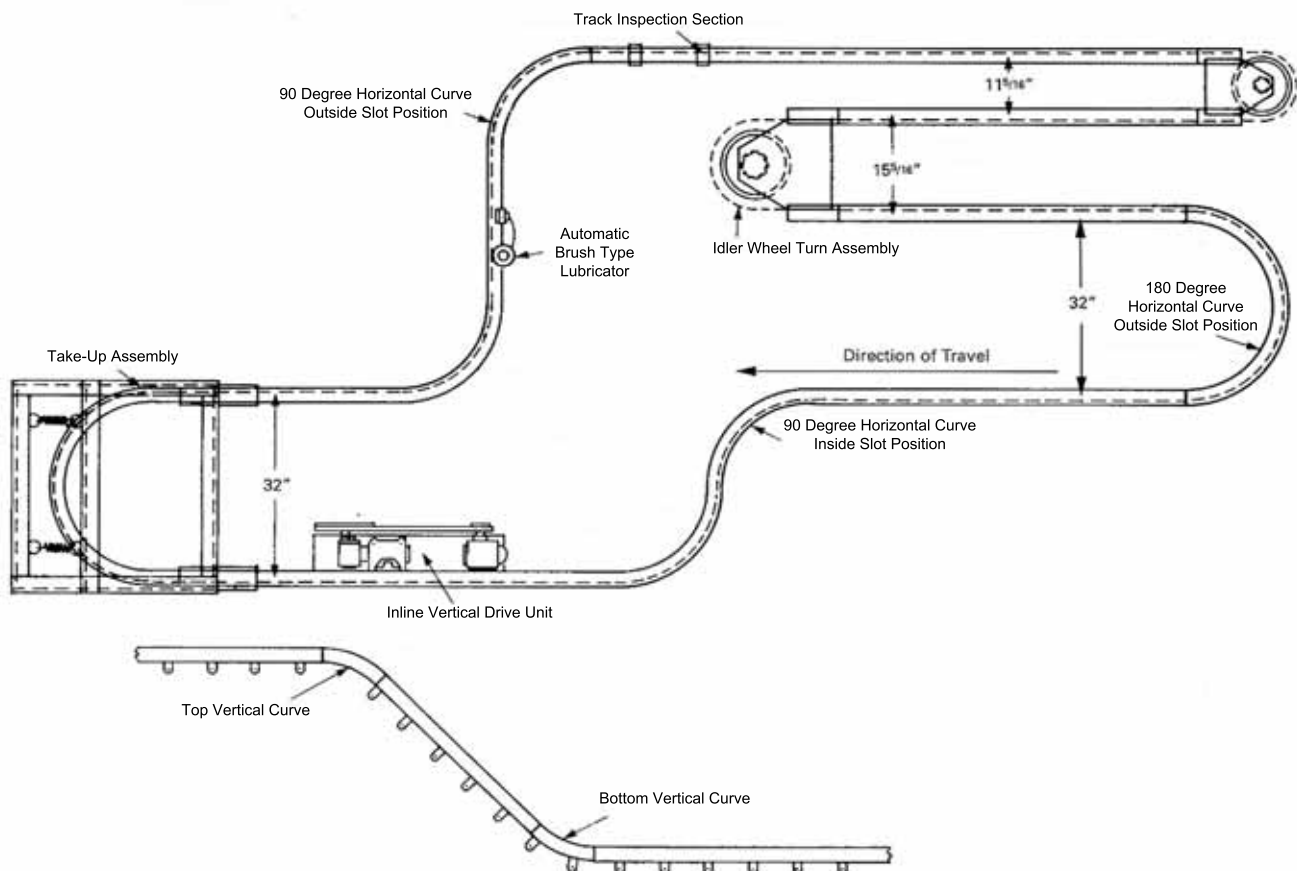
1stSource Products, Inc.

2822 Sable Mill Road
Silver Creek Business Center
Jeffersonville, IN 47130 USA

Tel: 812.288.7466 Fax: 812.288.7971

www.1stSourceProducts.com

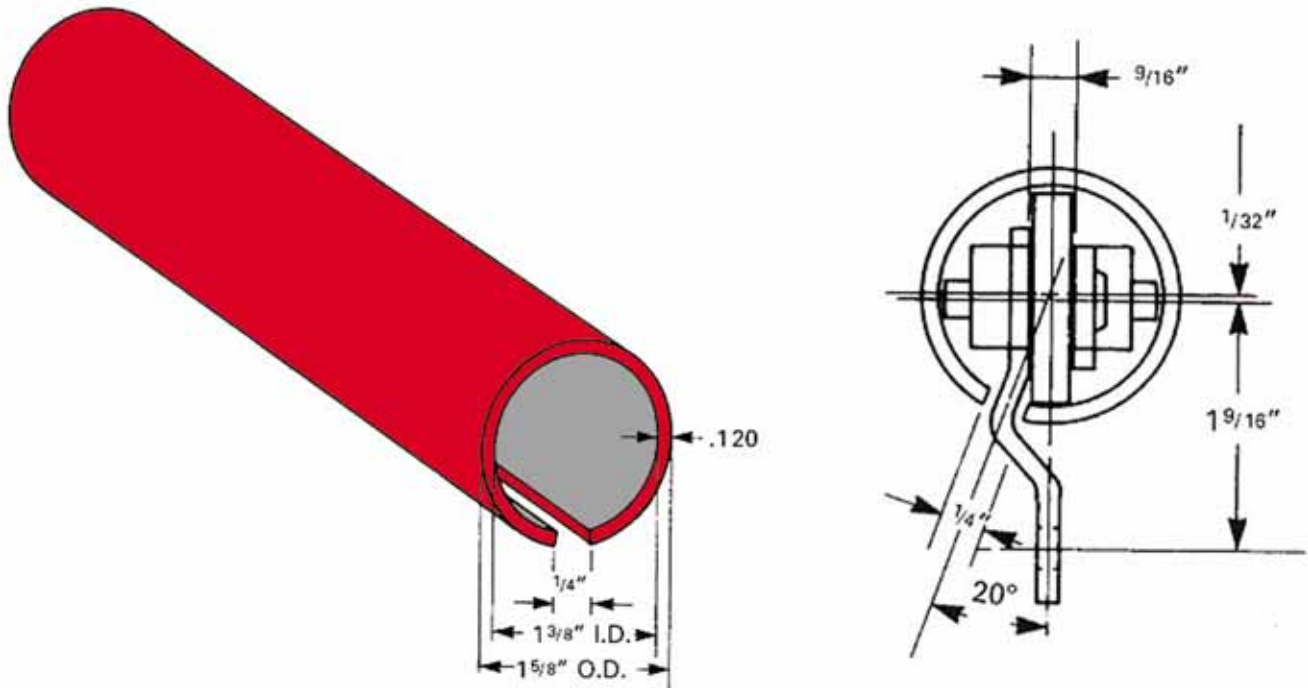
Straight Track	2
Track Components	3
Chain	4
Curves	5
Carriers	6
Horizontal Inline Drive Unit	7
Horizontal Corner Drive Units	8
Inline Vertical Drive Unit	9
Take-Up Units	10
Idler Sprocket Turns	11
Troubleshooting Guide	12
Lubrication Guide	13
Inspection Checklist	14
Inspection Log	15
Standard Product List	16
Other Products	17



Typical E-Trac Lite Design Layout

Straight Track

EL-2100 Straight Track is $1\frac{5}{8}$ " O.D. x $1\frac{3}{8}$ " I.D. open seam steel tubing with a $\frac{1}{4}$ " slot. Track is installed with the slot 20° off the vertical centerline. Straight track is fabricated from special cold formed steel and is available in standard 10 ft. and optional 12 ft. lengths.



Important Information Regarding Slot Position

The slot position is very critical in **E-Trac Lite** systems. On all powered systems the slot is always offset 20 Degrees at the bottom. This is sometimes referred to as the 5 o'clock or 7 o'clock positions. The slot position and offset must be maintained throughout the entire system.

On many components you do not have to specify the slot position because the component will work either way. Example: Straight track can be turned around to put the slot on the opposite side if necessary.

However, when specifying and/or ordering the following components you must specify the slot position (inside or outside):

- Horizontal Curves
- Horizontal Drive Units
- Take-Up Units
- Idler Sprocket Turns

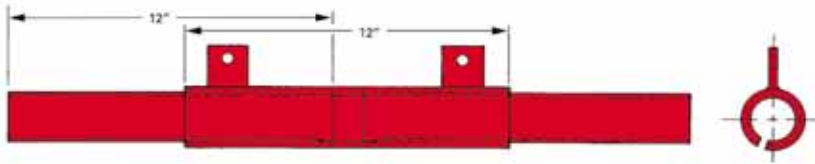
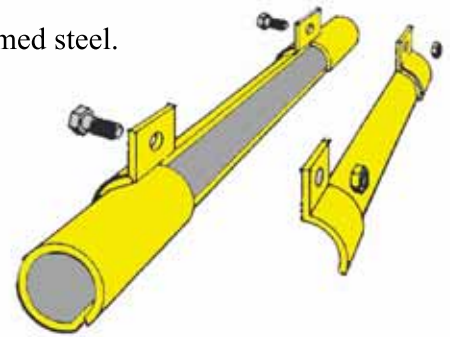
Please see page 5 for explanation of inside and outside slot positions.

When installing components you must periodically check the slot to insure that the 20 Degree offset is maintained.

Track components are fabricated from cold-formed steel.

EL-2101 Track Inspection Section

As illustrated (right), the 12" long inspection section has a removable side for easy access to the chain for inspection and maintenance. We advise installation of one track inspection station for every 200 ft. of conveyor. An inspection section at this interval makes installing the chain easier.

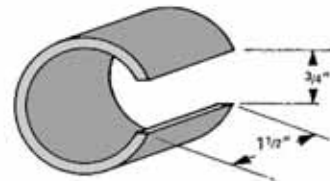


EL-2102 Track Oven Expansion Section

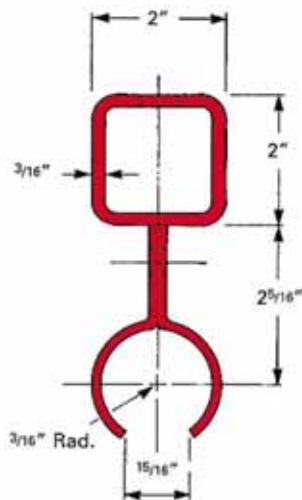
This unit is an inline track adjustment section wherein the central "sleeve" section is externally attached to the superstructure and the two tube sections at either end welded to their respective track sections leaving a $\frac{1}{4}$ " to $\frac{5}{8}$ " gap at the center. This gap allows the track to expand and contract without deformation in oven and high heat applications. Each run of straight track passing through an oven should have an oven expansion section. Additionally, any section of straight track subject to ambient temperature changes exceeding 150°F should be fitted with an expansion section.

EL-2105 Track Joint Welding Sleeve

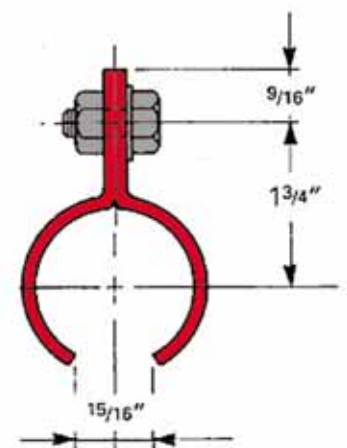
One is required at each junction of track, curves, idler sprockets, etc. Track hanger clamps are fabricated from cold-formed steel.



EL-2103 Hanger Clamp (Vertical Adjustment)



EL-2104 Hanger Clamp (Standard)

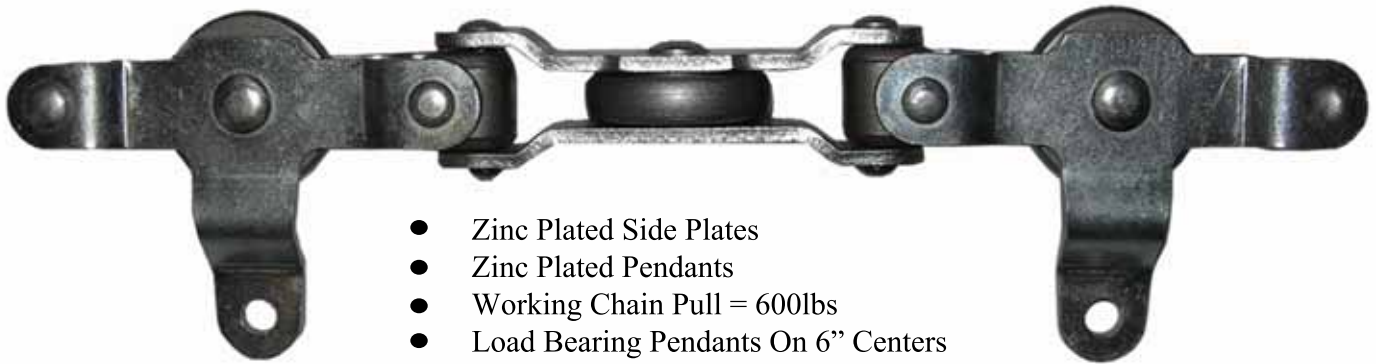


Track hanger clamp spacing:

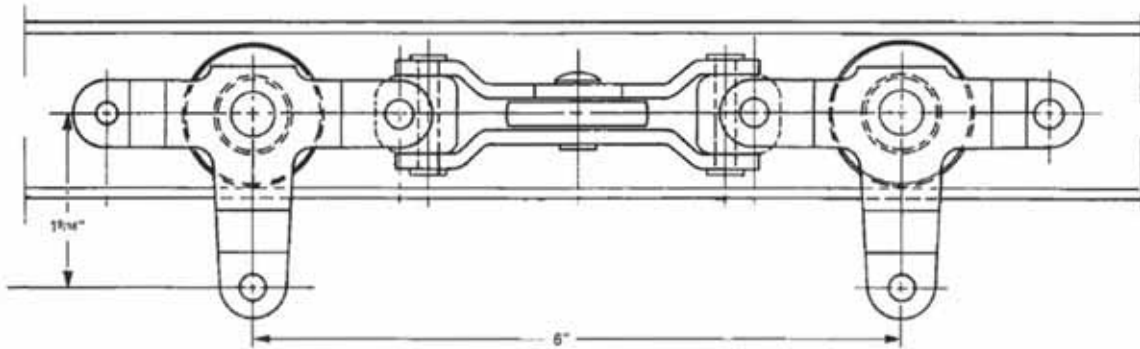
- 10' 0" centers up to 10 lbs. /ft. load
- 7' 0" centers from 11 to 30 lbs. /ft. load
- 5' 0" centers from 31 to 60 lbs. /ft. load

E-Trac Lite Chain

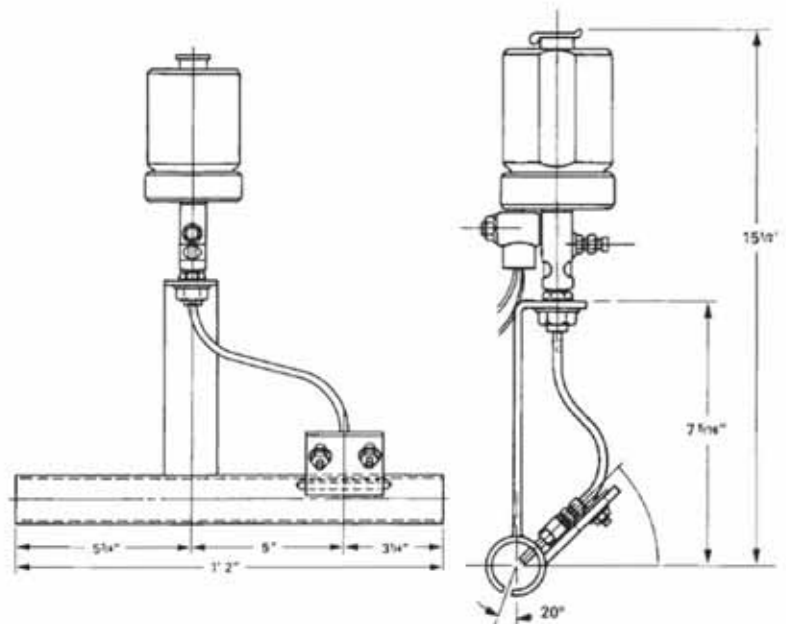
EL-2200 Conveyor Chain is a high tensile, heat-treated, semi-precision roller bearing chain.



- Zinc Plated Side Plates
- Zinc Plated Pendants
- Working Chain Pull = 600lbs
- Load Bearing Pendants On 6" Centers
- Load Bearing Pendant Capacity = 30lbs Each
- Chain is shipped in 10ft. lengths



The chain must be properly lubricated to ensure correct operation and chain life. An automatic lubricator is required on all systems. The automatic brush type solenoid-operated lubricator is attached to a 14" section of straight track which can be welded to any section of straight run in the system. The brush protrudes through a slot cut in the track. An adjustable screw regulates the amount of oil flow. Electrical connections can be attached to the motor leads, starter control circuit, a switch, or a timer, depending on requirements of the system. Lubricators are available for 115 volt, 230 volt or 460 volt connections. A lubricator should be installed on the outlet side of each oven, washer, dryer and degreaser. When used with an oven, it should be located sufficiently far from the outlet so that the chain is not too hot to the touch. In some applications, such as paint lines or systems with special washers, ovens and processing equipment, the use of brush oilers may not be appropriate. An automatic lubricator with lube designed specifically for these types of applications may need to be used. Consult with your 1stSource Products representative.



EL-2001 Automatic Brush Type Lubricator

Horizontal & Vertical Curves

Curves are fabricated from 1-5/8" O.D. x 1-3/8" I.D. steel tubing and heat treated to withstand normal wear. Horizontal curves are available in 16" and 24" radius curves. The 16" radius curves are stock items and are recommended in most applications. Vertical curves are available in 16" radius only. All curves are available in the following stock degrees: 15°, 30°, 45°, 60°, 90° and 180°. Intermediate degrees are available upon request. For very tight radius turns, see idler sprockets on page 11.

Horizontal Curve Chart

Part Number	Type	Radius	Degree	Slot Pos.
EL-HC-1615-I	Horizontal	16"	15	Inside
EL-HC-1615-O	Horizontal	16"	15	Outside
EL-HC-1630-I	Horizontal	16"	30	Inside
EL-HC-1630-O	Horizontal	16"	30	Outside
EL-HC-1645-I	Horizontal	16"	45	Inside
EL-HC-1645-O	Horizontal	16"	45	Outside
EL-HC-1660-I	Horizontal	16"	60	Inside
EL-HC-1660-O	Horizontal	16"	60	Outside
EL-HC-1690-I	Horizontal	16"	90	Inside
EL-HC-1690-O	Horizontal	16"	90	Outside
EL-HC-2415-I	Horizontal	24"	15	Inside
EL-HC-2415-O	Horizontal	24"	15	Outside
EL-HC-2430-I	Horizontal	24"	30	Inside
EL-HC-2430-O	Horizontal	24"	30	Outside
EL-HC-2445-I	Horizontal	24"	45	Inside
EL-HC-2445-O	Horizontal	24"	45	Outside
EL-HC-2460-I	Horizontal	24"	60	Inside
EL-HC-2460-O	Horizontal	24"	60	Outside
EL-HC-2490-I	Horizontal	24"	90	Inside
EL-HC-2490-O	Horizontal	24"	90	Outside

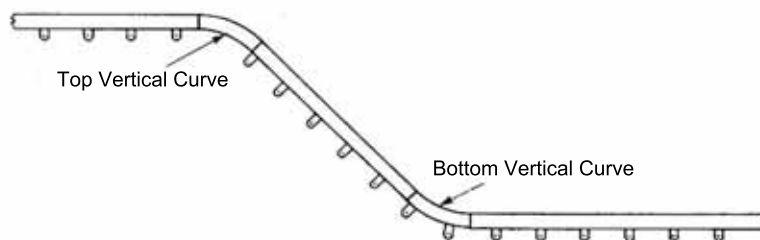
Consult factory for 36" Radius Curves.

Vertical Curve Chart

Part Number	Type	Radius	Degree
EL-VC-1615-T	Top Vertical	16"	15
EL-VC-1615-B	Bottom Vertical	16"	15
EL-VC-1630-T	Top Vertical	16"	30
EL-VC-1630-B	Bottom Vertical	16"	30
EL-VC-1645-T	Top Vertical	16"	45
EL-VC-1645-B	Bottom Vertical	16"	45
EL-VC-1660-T	Top Vertical	16"	60
EL-VC-1660-B	Bottom Vertical	16"	60
EL-VC-1690-T	Top Vertical	16"	90
EL-VC-1690-B	Bottom Vertical	16"	90

When ordering vertical curves, please specify top or bottom.

NOTICE:
You must specify slot position.



Determining Correct Slot Position

Horizontal Curves

Horizontal Curve
Outside Slot Position

This slot is on the outside radius of the curve

Horizontal Curve
Inside Slot Position

This slot is on the inside radius of the curve

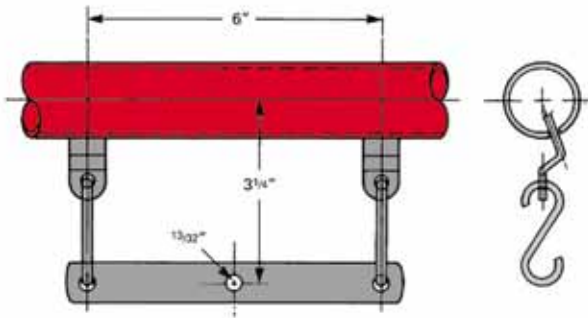
Determining Correct Slot Position

Vertical Curves

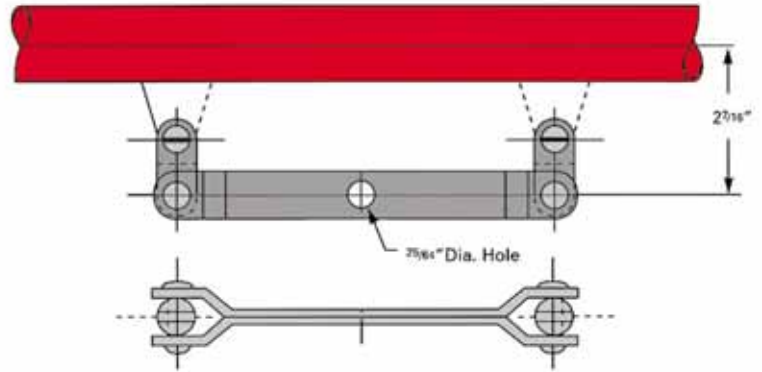
Top and bottom curves will work with either inside or outside slot position. It is critical to make sure slots are aligned and are at correct locations.

Carriers

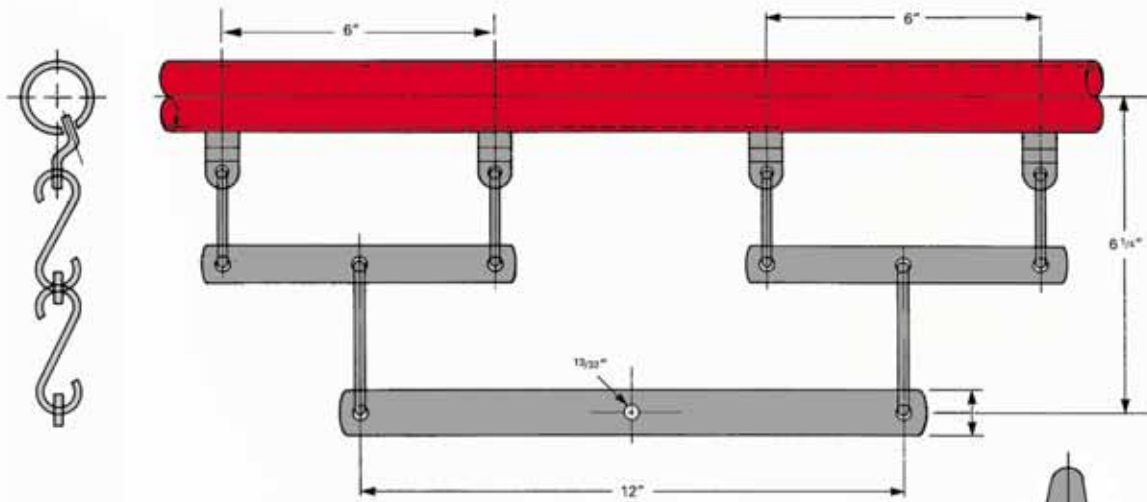
Load bar carriers are designed to allow the E-Trac Lite system to convey individual loads up to 120 lbs. Rotating Carrier: When installed with a rub rail the turning action is continuous during contact. NOTE: For special load bars, carriers and document handling attachments, please contact 1stSource Products.



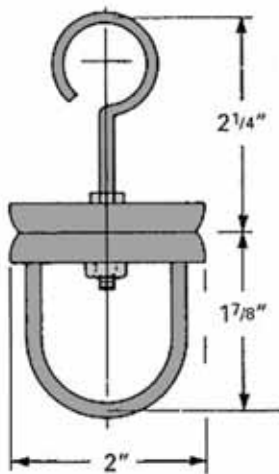
EL-2201 Single Load Bar Carrier
Capacity = 60lbs



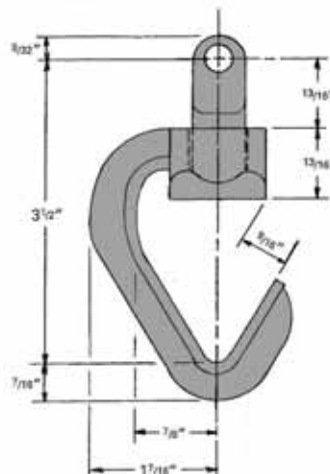
EL-2293 Single Load Bar w/Universals
Capacity = 60lbs



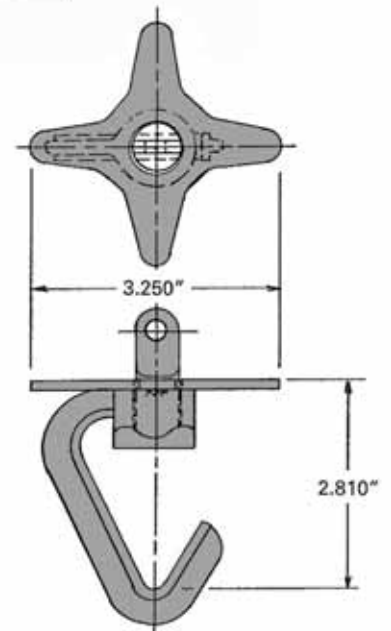
EL-2202 Double Load Bar Carrier
Capacity = 120lbs



EL-2204 Rotating Carrier
Capacity = 60lbs



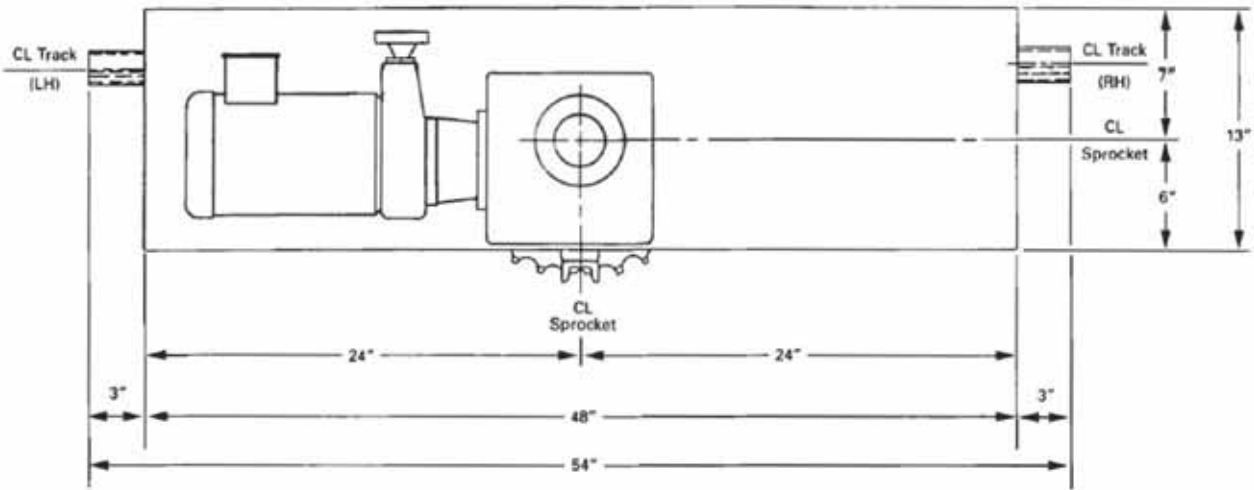
EL-2205 Index Hook
Capacity = 30lbs



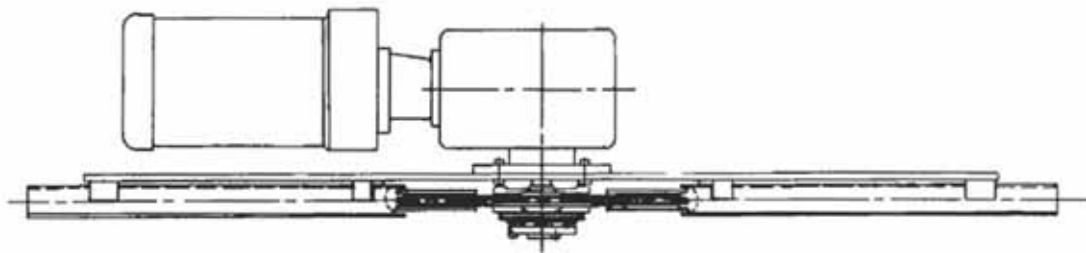
**EL-2206 Index Hook
w/Star for Automatic Indexing**
Capacity = 30lbs

Horizontal Inline Drive Unit

Simple and rugged, this new drive unit has no complicated or critical adjustments. Positive direct contact between sprocket teeth and chain provides constant straight line pull. The combination motor reducer is standard and eliminates the potential pinch point hazard between v-belt and combination sheave units. A direct friction clutch mounted on the gear reducer shaft provides overload protection and controls movement of the sprocket in both directions. These drive units are equipped with standard variable speeds of approximately 7:1 ratios. Almost any specifically-desired speed ratio can be obtained from 1 inch per minute to 80 feet per minute. When multiple drive units are required, synchronous motors and controls are available.



Plan View



Elevation



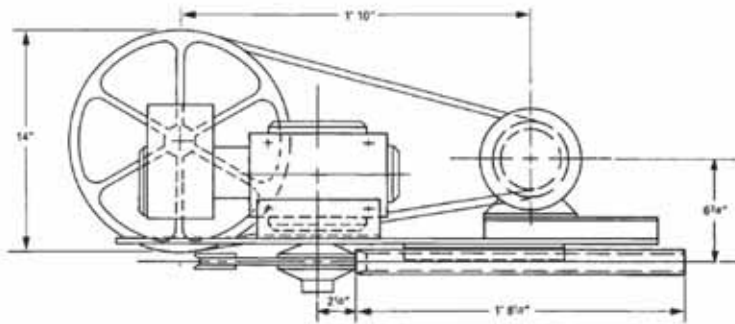
NOTICE:
You must specify slot
position.

EL-2160 Horizontal Inline Drive Unit

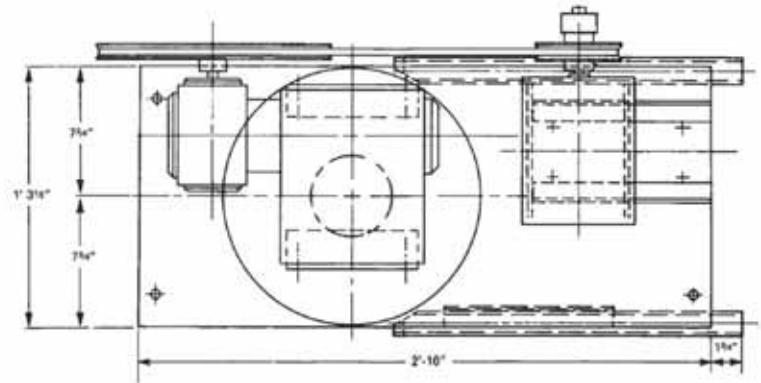
Horizontal Corner Drive Units

The 90° and 180° Horizontal Drives are desirable in applications where production requirements permit the use of these units. Closely spaced wide loads can collide or entangle when traveling around a 90° or 180° horizontal drive configuration. In applications where this is not a problem, two characteristics of the Horizontal Drives make these drives generally preferred to the Inline Vertical Drives. First, the horizontal drives have greater chain wrap than vertical drives. Second, the horizontal sprocket employed in the horizontal drives support the **E-Trac Lite** chain on the horizontal plane—a higher level of support than is provided by the Inline Vertical Drive. These drives save you the cost of either the 90° or 180° curve. The 90° and 180° Horizontal Drives are available with three phase ¾ HP motors (600 lb. chain pull). Stock single phase motors in ¾ HP are also available and special motors can be fitted when required. Horizontal Drives have a 2.8 to 1 speed variation ratio. These drives are equipped with a safety overload torque clutch. Dual drives and take-ups are recommended on any system with a calculated chain pull over 600 lbs., or a linear length of over 500 ft.

EL-2180-O or I 180° Horizontal Drive 600lb Chainpull - 3/4 HP Standard

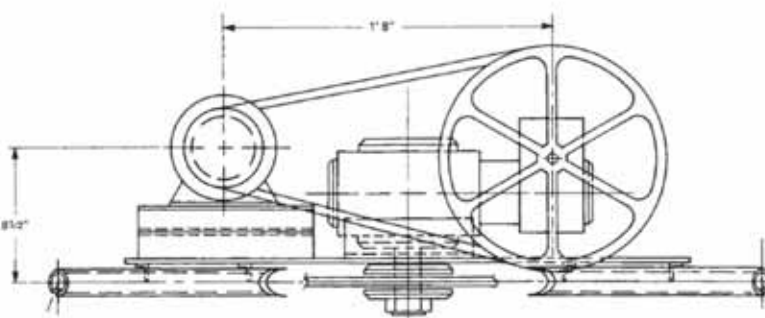


Elevation View

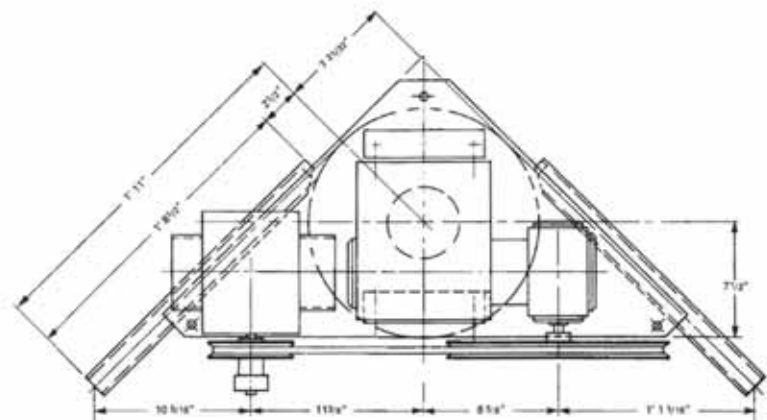


Plan View

EL-2190-O or I 90° Horizontal Drive 600lb Chainpull - 3/4 HP Standard



Elevation View

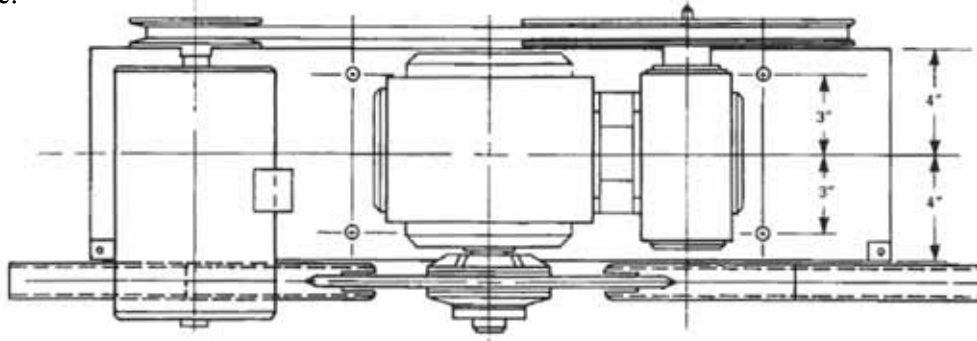


Plan View

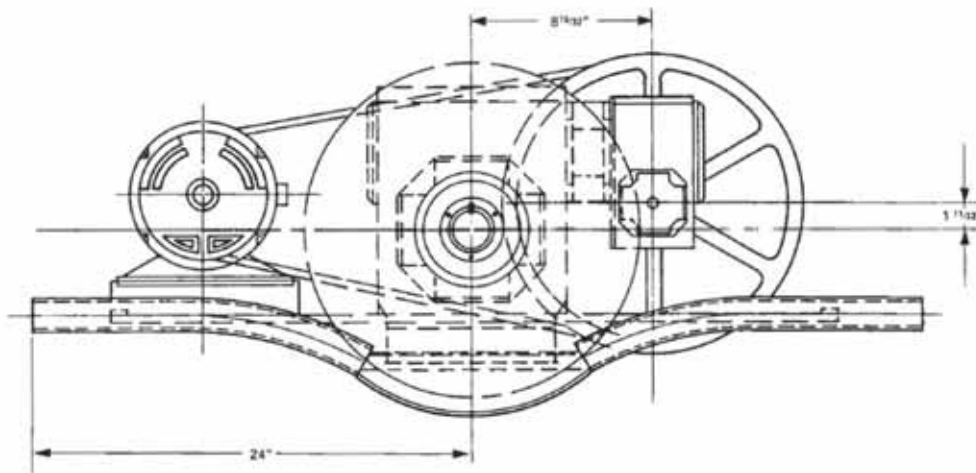
NOTICE:
You must specify slot
position.

Inline Vertical Drive Unit

The Inline Vertical Drive is the most widely-used drive. The primary advantage is these units allow wide products to be suspended from an **E-Trac Lite** at closer intervals than is possible with other drives. Wide loads closely spaced can entangle or collide when traveling around a 90° or 180° horizontal drive configuration. The Inline Vertical Drive is normally equipped with a dual voltage, three-phase ¾ HP motor (230/460 volt, 60 HZ) providing 600 lb. chain pull. A single phase ¾ HP motor is also available, and special motors can be fitted when required. The drive is equipped with a safety overload torque clutch. Dual drives and take-ups are recommended on any system with a calculated chain pull over 600 lbs., or a linear length over 500 ft. Multiple drives require special load sharing controls. Consult with your 1stSource Products representative.



Plan View



Elevation



EL-2150 Inline Vertical Drive Unit

Take-Up Units

A take-up unit is required on all E-Trac Lite systems

EL-2106-O or I

The Standard Take-Up Unit is spring loaded, utilizes a 16" radius 180° curve and is 32" wide. The Standard Take-Up provides 8" travel.

EL-2107-O or I

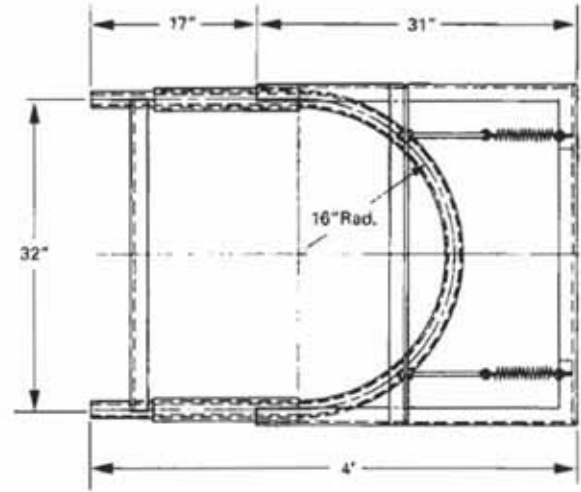
These Take-Up Units provide standard travel but with widths from 33" to 60". These units utilize two 16" radius 90° curves joined by a section of straight track from 1" to 28" in length.

EL-2108-O or I

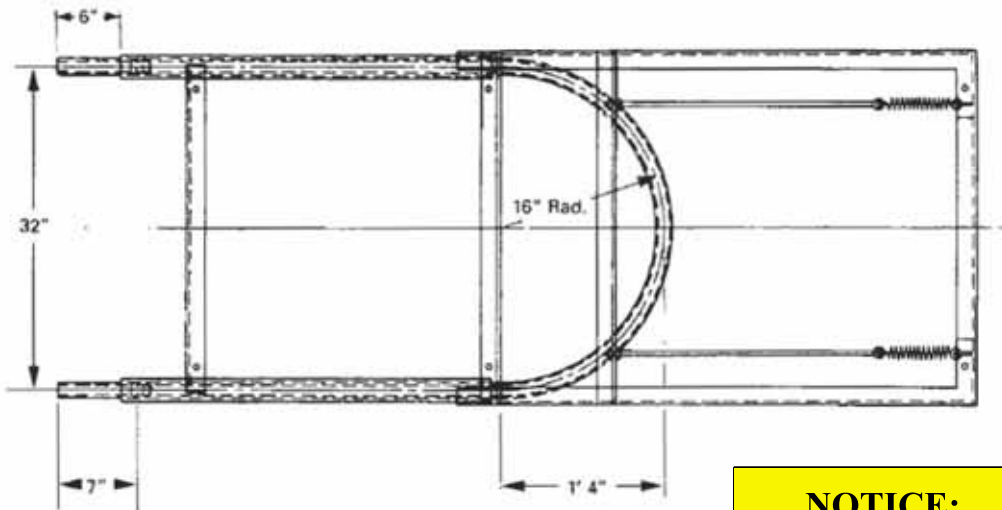
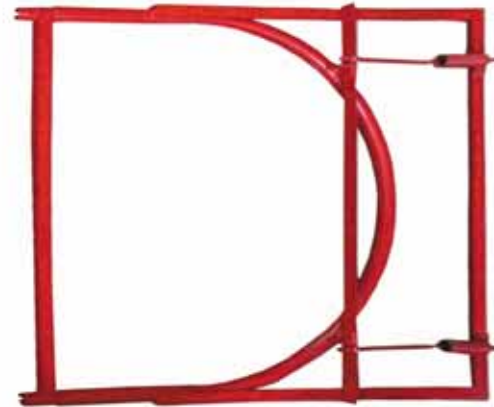
These units are the same as EL-2107, except that they are 61" to 120" wide. These extra-wide units (EL-2107 and EL-2108) are used when exact spacing of carrier centers is required.

EL-2116-O or I

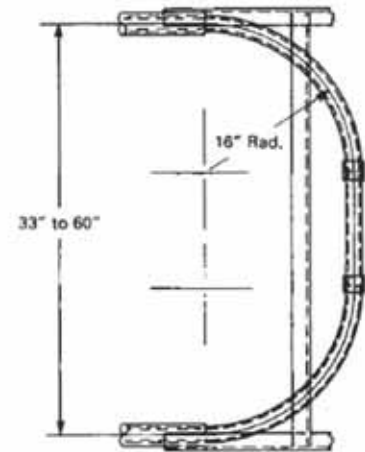
These are similar to the Standard Take-Up Units, except they provide longer sleeves. Long Sleeve Take-Up Units provide up to 36" of travel. These units are usually counter-weighted, rather than spring operated. Long Sleeve Take-Ups are used in systems where variations in temperature cause excessive expansion and contraction in the chain. These units are also recommended for systems with multiple drives.



EL-2106-O or I
Standard 16" Radius Take-Up



EL-2116-O or I
Long Sleeve 16" Radius Take-Up

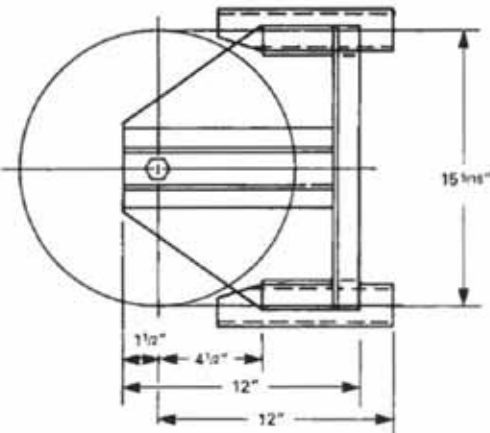


EL-2116-O or I
Special 16" Radius Take-Up

NOTICE:
You must specify slot
position.

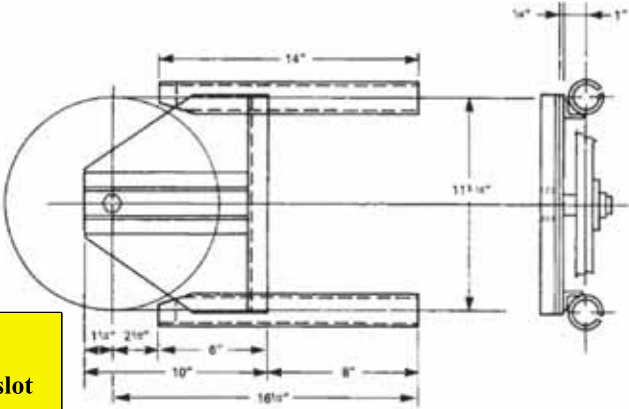
Idler Sprocket Turns

Idler sprocket turns are used for extremely short radius turns. The Idler Sprocket Turns are fabricated with graphite impregnated bronze bearings with a rating of 750°F. Idlers are especially useful in ovens where it is desirable to have E-Trac Lite lines closer together than the 32" afforded by the standard 16" radius curves. The standard configuration for Idler Sprocket Turns is 180°. For configurations in 30°, 45°, 60° and 90° please contact your 1stSource representative.



**EL-2111-O or I (15-5/16" P.D.)
Idler Sprocket Turn Assembly**

NOTICE:
You must specify slot position.

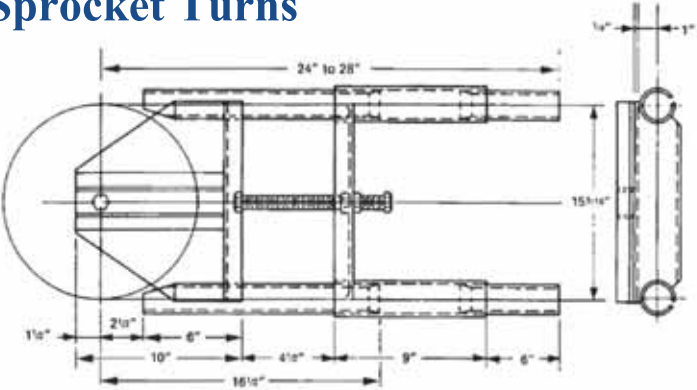


**EL-2112-O or I (11-5/16" P.D.)
Idler Sprocket Turn Assembly**

Take-Up Idler Sprocket Turns

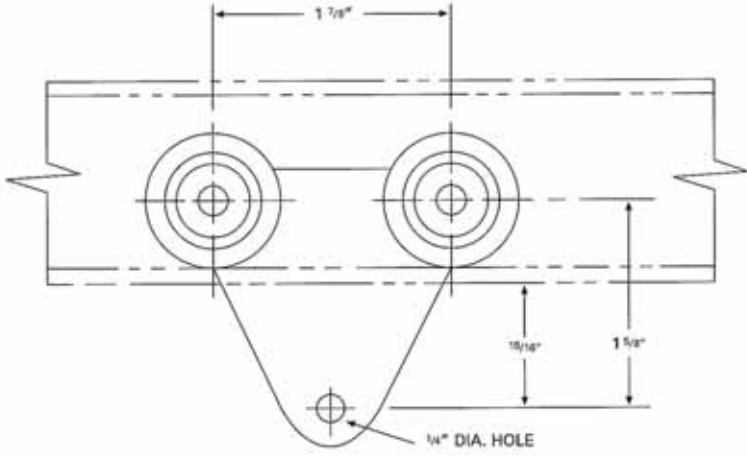
Take-Up Idler Sprocket Turns are used on systems less than 150 ft. in length and where a small radius turn is required. These units are especially useful where a turn or take-up is located in an oven. The Take-Up Idler Sprocket Turn provides 4" of travel.

**Available in 11-5/16" P.D. (EL-2110-O or I)
and 15-5/16" P.D. (EL-2109-O or I)**



Hand Pushed 4 Wheel Trolley

This is a trolley that is manually pushed through the conveyor track. It is ideally suited for operations where a powered conveyor is not needed.



**EL-2824 Four Wheel Trolley Assembly
Capacity: 120 lbs.**

Troubleshooting Guide

Take-Up

Problem	Common Cause	Solution
Lack of floating frame movement	Too little extension	Increase Spring Tension
	Dry or damaged expansion joints	Lubricate or replace expansion joints if damaged

Drive

Problem	Common Cause	Solution
Decrease in conveyor speed	Belt slippage	Replace belt
	Torque limiter slippage	Adjust torque limiter
	Set screws on pulley loose causing pulley to rotate on shaft	Adjust pulley and tighten set screws
Excessive noise in reducer	Lack of lubrication	Fill with oil to oil level. If necessary, change oil. Grease all fittings
	Oil leak	Tighten all fittings and add oil
	Worn or broken gear	Disassemble reducer and replace damaged gear
Motor operating above normal temperature	Excessive chain tension	<i>See Trouble 4 under Chain</i>
Chain droops at sprocket	Chain too loose	Adjust take-up until chain is snug
	Lack of lubrication	Lubricate

Track

Problem	Common Cause	Solution
Excessive wear or peening of slot	Bent pendants	Replace damaged track
	Unbalanced loading	Load must hang with center of gravity

Lubricator

Problem	Common Cause	Solution
No oil emerging from lubricator	Oil flow lines restricted	Remove flow lines and clean
	Adjusting screw not properly set	Adjust screw to permit sufficient oil flow
	Solenoid burned out	Replace solenoid

Curves

Problem	Common Cause	Solution
Slot opened up	Excessive chain tension	Remove and replace curve

Chain

Problem	Common Cause	Solution
Sluggish or frozen wheel bearings	Residue accumulation due to over lubrication	Remove and clean
	Bearings worn or corroded	Replace chain
Bent side plates	Damaged due to jam or obstruction	Remove obstruction and replace side plates.
Sluggish or frozen universal blocks	Residue accumulation due to over lubrication	Remove and clean
Excessive wear or chain tension	Lack of lubrication	Clean and lubricate
	Worn out chain	Replace chain
	Obstruction in chain path	Remove obstruction, remove and replace chain if damaged
	Conveyor overloaded	Do not load conveyor beyond designed capacity
Excessive chain slack	Chain growth through normal wear	Adjust take-up screws by increasing spring tension. If necessary, remove links of chain
Bent chain pendants	Obstruction in pendant path	Remove obstruction. Replace damaged pendants

Weekly

Item	Action	Type
Conveyor lube reservoir	Fill to level mark	Varies per application
Drive shaft bearings	Any grease fittings	Lithium based grease
Drive roller chain	Brush or spray	Chain lube
Drive caterpillar chain	Brush or spray	Chain lube

Monthly

Item	Action	Type
Air cylinder oiler	Fill to level mark	Refer to mfg instructions
Drive gear reducer	Fill to level mark	SAE 120 oil or mfg specs

Semi-Annually

Item	Action	Type
Power & free trolleys	Any grease fittings	Lithium based grease
Carrier load bars	Any grease fittings	Lithium based grease

Annually

Item	Action	Type
Drive gear reducer	Drain and refill	SAE 120 Oil or mfg specs
Chain take-up assembly	Grease telescoping track	SAE 120 Oil
Automatic stop assembly	Grease side plates	SAE 120 Oil

Notes

1. Lubricate all bearings and other parts of the drive unit before starting up the conveyor.
2. The conveyor chain lubricant will be based on temperature, speed, environment, chain length, and loading information.

Preventive Maintenance Inspection Checklist

Weekly PMI

Event	Instructions
Inspect Chain	<ul style="list-style-type: none">• Check for pulsation• Check for excessive slack
Inspect Take-Up Assembly	<ul style="list-style-type: none">• Check lubrication• Check spring tension

Monthly PMI (in addition to weekly events)

Event	Instructions
Inspect Chain	<ul style="list-style-type: none">• Check for proper lubrication on chain bearings and pins• Check for frozen or sluggish wheels• Check for excessive wear• Check for excessive slack• Check for pulsation or surging condition
Inspect Take-Up Assembly	<ul style="list-style-type: none">• Check for slot wear• Check spring tension• Check available expansion
Inspect Drive	<ul style="list-style-type: none">• Check for loose mounting bolts• Check drive belt condition• Check alignment of pulleys and sprockets• Check for sprocket wear• Check track condition
Inspect Track & Curves	<ul style="list-style-type: none">• Check for slot wear• Check for obstructions in chain path

Annual PMI (in addition to monthly events)

Event	Instructions
Inspect Chain	<ul style="list-style-type: none">• Pull chain and inspect for wear
Inspect Drive	<ul style="list-style-type: none">• Drain and fill motor gear reducer

E-Trac Lite Standard Component List

Track & Accessories		Horizontal Power Curves 16" Radius	
EL-2100-10	Track 1-5/8" O.D. (10'-0" Lengths)	EL-180-16-I/O	180 Degree Horizontal (Specify Slot Location)
EL-2101	Track Inspection Section	EL-90-16-I/O	90 Degree Horizontal (Specify Slot Location)
EL-2102	Oven Track Expansion Section	EL-60-16-I/O	60 Degree Horizontal (Specify Slot Location)
EL-2103	Hanger Clamp (Adjustable)	EL-45-16-I/O	45 Degree Horizontal (Specify Slot Location)
EL-2104	Hanger Clamp (Standard)	EL-30-16-I/O	30 Degree Horizontal (Specify Slot Location)
EL-2105	Track Joint Welding Sleeve	EL-15-16-I/O	15 Degree Horizontal (Specify Slot Location)
EL-2129	Angle Finder	Horizontal Power Curves 24" Radius	
EL-2100-R	Touch-Up Paint (Regal Red Color)	EL-180-24-I/O	180 Degree Horizontal (Specify Slot Location)
Conveyor Chain		EL-90-24-I/O	90 Degree Horizontal (Specify Slot Location)
EL-2200	Conveyor Chain (10'-0" Lengths)	EL-60-24-I/O	60 Degree Horizontal (Specify Slot Location)
EL-2200-TB	Track Cleaning Brush	EL-45-24-I/O	45 Degree Horizontal (Specify Slot Location)
EL-2200-GP	Conveyor Chain (10'-0" Lengths) High Temp Grease	EL-30-24-I/O	30 Degree Horizontal (Specify Slot Location)
Attachments		EL-15-24-I/O	15 Degree Horizontal (Specify Slot Location)
EL-2201	Single Load Bar Carrier (60 lb cap.)	Vertical Power Curves 16" Radius	
EL-2202	Double Load Bar Carrier (120 lb cap.)	EL-180-16-U/D	180 Degree Vertical (Specify Slot Location)
EL-2204	Rotating Carrier Assembly (60 lb cap.)	EL-90-16-U/D	90 Degree Vertical (Specify Slot Location)
EL-2105	90 Degree Indexing Hook (30 lb cap.)	EL-60-16-U/D	60 Degree Vertical (Specify Slot Location)
EL-2206	90 Degree Indexing Hook w/Star (30 lb cap.)	EL-45-16-U/D	45 Degree Vertical (Specify Slot Location)
EL-2217	Indexing Trip Rod Assembly	EL-30-16-U/D	30 Degree Vertical (Specify Slot Location)
EL-2293	Single Load Bar Carrier w/Universals (60 lb cap.)	EL-15-16-U/D	15 Degree Vertical (Specify Slot Location)
EL-2824	4-Wheel Trolley Assembly (120 lb cap.)	Drive Replacement Parts	
Lubrication		EL-2150-012	Inline Vertical Drive Sprocket
EL-2001-115	Automatic Brush Type Lubricator - 115 Volt	EL-2150-005	Inline Vertical Drive Chain Retainer
EL-2001-230	Automatic Brush Type Lubricator - 230 Volt	EL-2150-050	Inline Vertical Drive Power Tubes (pair)
EL-2001-460	Automatic Brush Type Lubricator - 460 Volt	EL-2180-050	Horizontal Drive Sprocket w/Lugs
EL#309	High Temperature Oil (gallon)	EL-2180/90-050	Horizontal Drive Power Tubes (pair, specify style)
NOTE:	<i>Please consult factory for components not listed Make sure to specify correct slot position</i>	EL-2160-050	Horizontal Drive Power Tubes (pair) for EL-2160
		Idler Sprocket Turns	
		EL-2111-I/O	Idler Take-Up, 15-5/6" P.D. (specify slot location)
		EL-2112-I/O	Idler Take-Up, 11-5/6" P.D. (specify slot location)
Take-Up Assemblies			
EL-2106-I/O	16" Radius x 180 Degree Spring Type Take-Up, 32" Spread (Specify Slot)		
EL-2116-I/O	16" Radius x 180 Degree Long Sleeve Spring Type Take-Up 32" Spread (Specify Slot)		
EL-2109-I/O	15-5/16" Pitch Diameter 180 Degrees Screw Type Take-Up (Specify Slot)		
EL-2110-I/O	11-5/16" Pitch Diameter 180 Degrees Screw Type Take-Up (Specify Slot)		
EL-2156	Manual Take-Up Sleeves (pair)		
Drives			
EL-2160-101	Horizontal Inline Drive with 3/4 HP Motor (0.6 to 4.0 FPM)		
EL-2160-102	Horizontal Inline Drive with 3/4 HP Motor (2.4 to 24 FPM)		
EL-2160-103	Horizontal Inline Drive with 3/4 HP Motor (10.0 to 69.7 FPM)		
EL-2150	Inline Vertical Drive with 3/4 HP Motor (2.4 to 24 FPM)		
EL-2180-I/O	180 Degree Horizontal Drive with 3/4 HP Motor (2.4 to 24 FPM) (Specify Slot)		
EL-2190-I/O	90 Degree Horizontal Drive with 3/4 HP Motor (2.4 to 24 FPM) (Specify Slot)		

Other quality material handling products available from 1stSource Products, Inc. include:

E-Trac™ Enclosed Track Conveyor Equipment

- E-Trac-6 6" pitch enclosed track conveyor equipment
- E-Trac-8 8.125" pitch enclosed track conveyor equipment
- E-Trac-Q1 Side x side power & free equipment
- E-Trac-Q2 Over / under power & free equipment

X-Trac I-beam Monorail Equipment

- X-348 3" I-beam monorail equipment
- X-458 4" I-beam monorail equipment
- X-678 6" I-beam monorail equipment

Package Handling Equipment

- Ball transfer tables
- Belt conveyors
- Chain transfers
- Flexible / expandable conveyors
- Flow rails
- Roller conveyors (gravity and powered)
- Skatewheel conveyors
- Tire retread equipment www.1stsourceretread.com
- Turntables

Replacement Components

- Ball transfers www.1stsourceballtransfers.com
- Bearings www.1stsourcebearings.com
- Chain
- Casters
- Rollers
- Skatewheels
- Sprockets
- Trolleys



In addition to material handling, 1stSource Products, Inc. also manufactures many components in other industries.

Other Product Lines

- Dura-Max Fence & Gate Hardware www.1stsourcefence.com
- 1stSource Industrial Hardware & Tools www.1stsourcetools.com
- 1stSource Industrial Hinges www.1stsourcehinges.com



1stSource Products, Inc. also has an OEM division specializing in providing high quality subcomponents and complete assemblies for many different industries.

1stSource Products, Inc.

2822 Sable Mill Road, Silver Creek Business Center

Jeffersonville, IN 47130 USA

Tel: 812.288.7466 Fax: 812.288.7971



www.1stSourceProducts.com